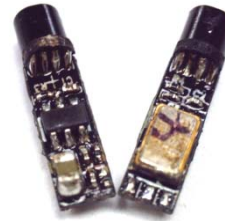




This is a family of products based on the most advance CMOS mixed signal technology. It integrates image array, signal processing, timing and control circuitry, all on a single chip. It is ideal for applications requiring a small footprint, low power and low cost.

**Features:**

- Small size : 4 mm diameter
- Resolution: 100Kpixels
- Low operation voltage (3.3V)
- Built in lens with IR cut filter
- Low power consumption
- Direct connect to standard video monitor



**Pin Description**

1. CVO Composite Video Output  
Direct connect to TV/Monitor
2. GND Common Ground for power and video
3. PWR Power Supply 3.3V DC

**Connection Diagram**



**Specification**

Imager	CMOS imager sensor OV6920
Optical Format	1/18"
Shutter	1/60 to 1/5.7 usec
Video Output	Composite video (75Ω)
Picture Element	320x240 pixel
Effective image area	820x625um
S/N Ratio	42dB
Fixed pattern noise	<0.03% Vp-p
Dynamic range	42dB
Operation Voltage	3.3VDC
Connection	PWR, Video, GND
Lens	F2.8, EFL:0.96mm with IR cut
FOV	55deg

**Electrical Characteristic at 25C**

	Min	Typ	Max	Unit
Operation Voltage	3	3.3	3.5	V
Operation Current (no load)		18		mA
Operation Temperature	0		45	deg C

Note: Operation will be varied according to the brightness of scene.